

# PIPE INSULATION SYSTEM

---



700 PRODUCE RD.  
78557 HIDALGO, TX



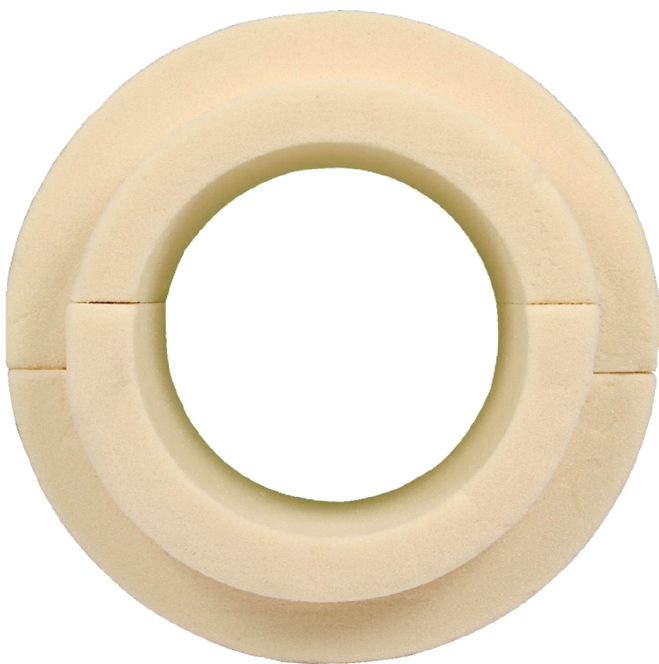
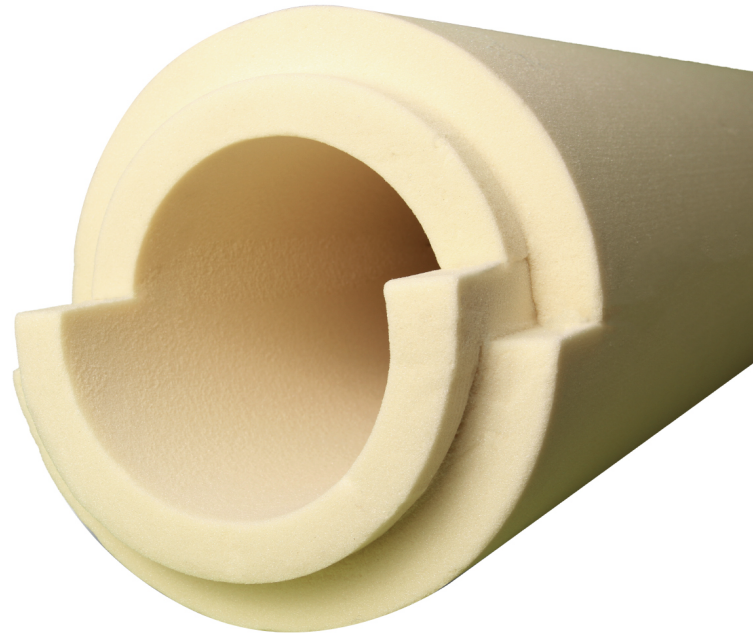
[Info@msmaxisave.com](mailto:Info@msmaxisave.com)



[www.msmaxisave.com](http://www.msmaxisave.com)

## Pipe and Curve Segments Insulation

We provide Preformed Pipe Insulation and Curve Segments for the wide open range of industrial and commercial applications including Insulation for NPS, Pipe Sizes, Ducts, and Vessels



## Advantages

There are a lot of industrial types and commercial applications with a grand range of temperatures. Our Company is specialized in manufacturing preformed pipe insulation in a variety of materials available with both ASJ and FSK Vapor Barriers.

We offer different preformed shapes in order to supply an option for each requirement allowing to obtain the maximum benefit with the best product. We provide a suitable solution to our customers' necessities.

## Available Materials

Cellular Glass  
Extruded Polystyrene  
Polyisocyanurate  
Phenolic  
Mineral Wool



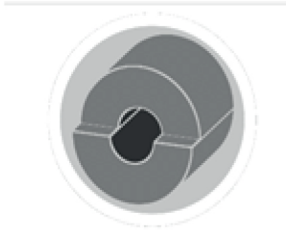
## Standards and Tolerances.

Our Pipe Insulation is manufactured according to the tolerance for the applicable standards:

ASTM C585 Standard Practice for Inner and Outer Diameters of Thermal Insulation for Nominal Sizes of Pipe and Tubing

ASTM C450 Standard Practice for Fabrication of Thermal Insulating Fitting Covers for NPS Piping, and Vessel Lagging





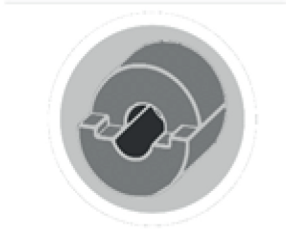
## Simple Pipe Preformed (SPP)

A good solution for general purposes mostly in non-extreme temperatures, recommended for a range temperature from 50°F to 340°F (10°C to 171°C).



## Overlapped Head Preformed (OHP)

More Insulation Efficiency even in pipe thermal expansion and contraction in high temperatures applications, recommended for a range from 300 °F to 467 °F (149°C to 242°C)



## Single Overlap Preformed (SOP)

A good solution in cold pipe lines which helps to eliminate the possibility of having space between pieces, recommended from 5°F to 50°F (-15°C to 10°C).



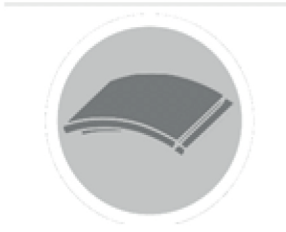
## Double Overlap Preformed (DOP)

A Complete Preformed System to extreme low temperatures recommended for Cryogenic and Refrigeration applications, also useful in extreme high temperatures, recommended from -310°F to 5°F and 467°F or above (-190°C to -15°C and 242°C or above).



## Simple Curve Segment (SCS)

Curve Segments for Ducts and Vessels equipment recommended for general purposes, mostly in non-extreme temperatures.



## Double Overlap Segment (DOS)

These Curve Segments have overlap in both length and width sides. They are recommended for Cryogenic and refrigeration applications.